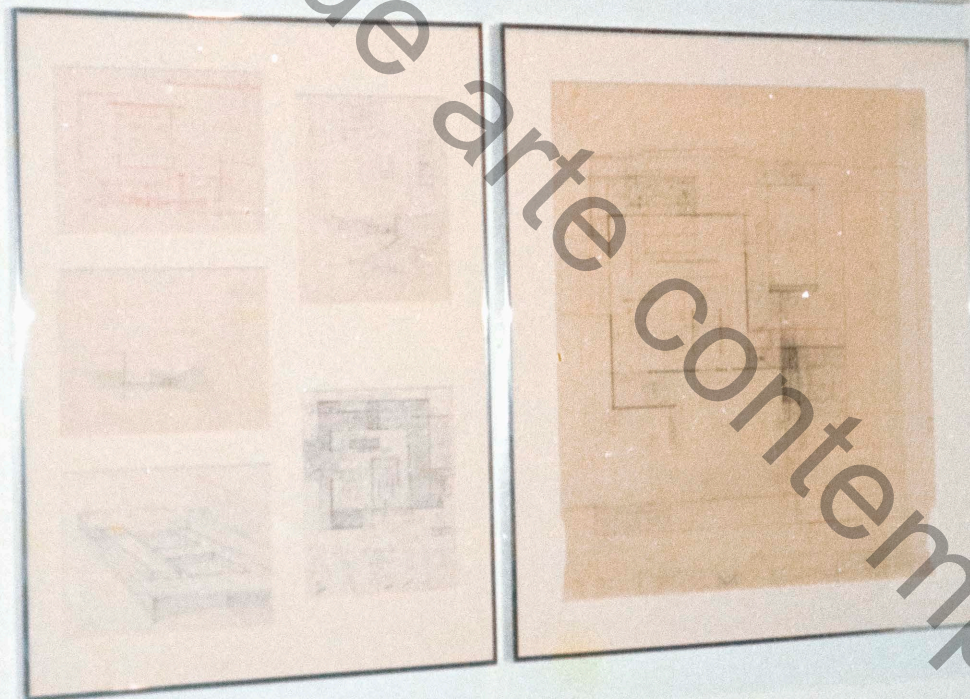
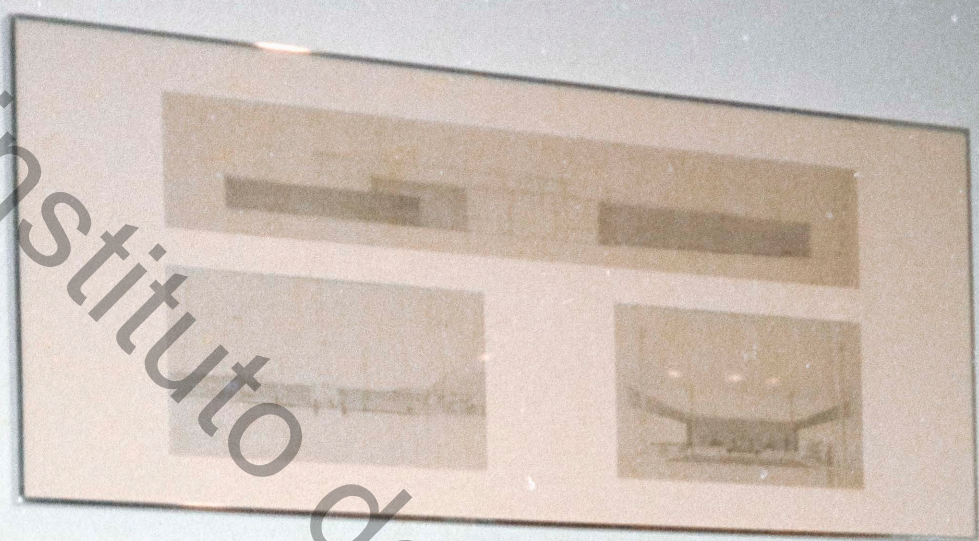


GERMAN PAVILION, 1935 BRUSSELS WORLD'S FAIR



1935
German Pavilion
1935 Brussels World's Fair

The pavilion was designed by the architect Hans Poelitz and was one of the most important works of the Weimar Republic. It was a masterpiece of modernist architecture, characterized by its use of geometric forms and its rejection of traditional architectural conventions. The pavilion was a landmark in the history of modern architecture, and it has since become a symbol of the Weimar Republic's cultural and political achievements.

The pavilion was designed by the architect Hans Poelitz and was one of the most important works of the Weimar Republic. It was a masterpiece of modernist architecture, characterized by its use of geometric forms and its rejection of traditional architectural conventions. The pavilion was a landmark in the history of modern architecture, and it has since become a symbol of the Weimar Republic's cultural and political achievements.

Instituto de arte contemporânea