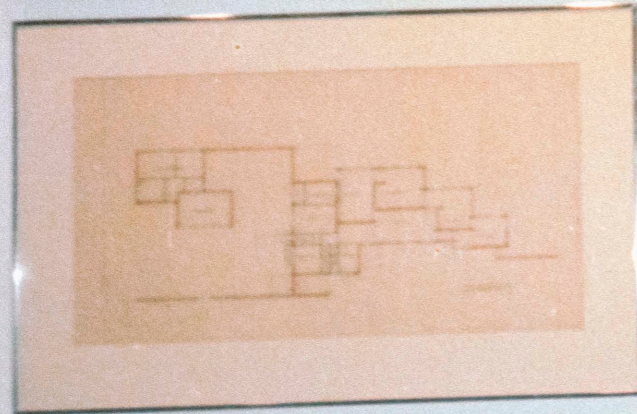
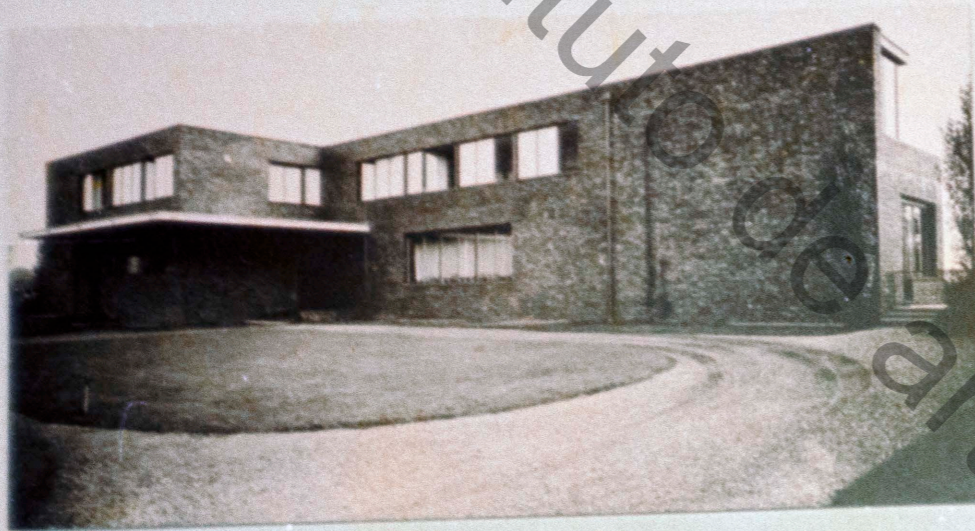


WOLF MEISE 1925-27

ESTERS AND LANGE HOUSES 1927



1927-28  
Esters and Lange Houses  
Munich

The houses were designed for two families and are a fine example of the modern movement in architecture. The houses are built of brick and have a flat roof. The windows are arranged in a horizontal band. The houses are built on a hillside and have a large garden. The houses are built in 1927-28 and are a fine example of the modern movement in architecture.

