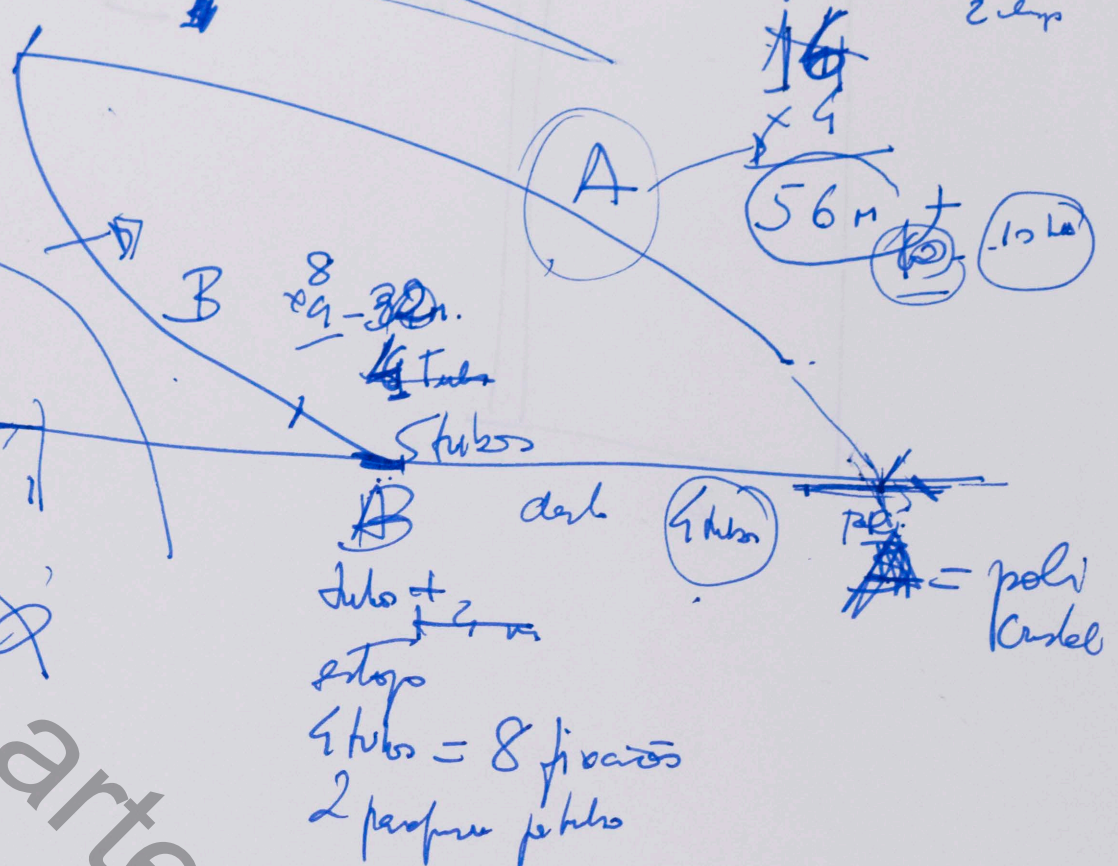


19 tubos - 8 tubos
 + 5 mais panes =

14 (12m lun
 2 claps
~~16~~
 x 4
56m + 10 10

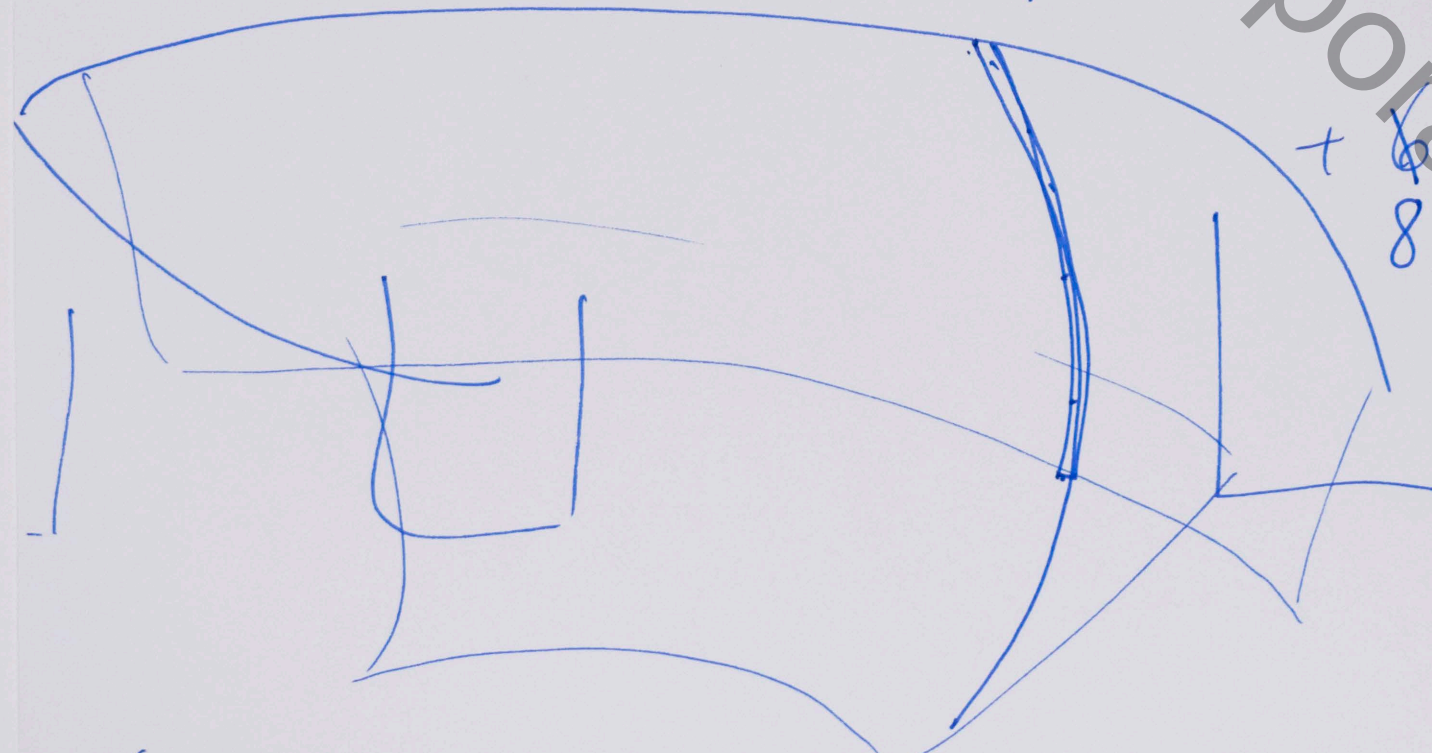
68000



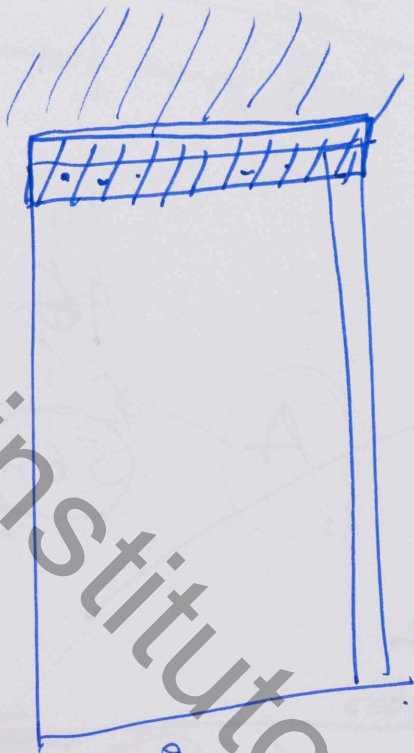
estopo $\frac{3}{4} = 2m$

1º andar - 2 mais panes.
 2º andar - 4 mais panes. A
 1 mais B

8 pontos
 + 7 pontos
 15 esta / fengus p/ pedra.
 + 6 pontos -
 8
 2 contra claps



6m, esta se pane - alme. - 3m



2.05



instituto de arte contemporânea

20.