

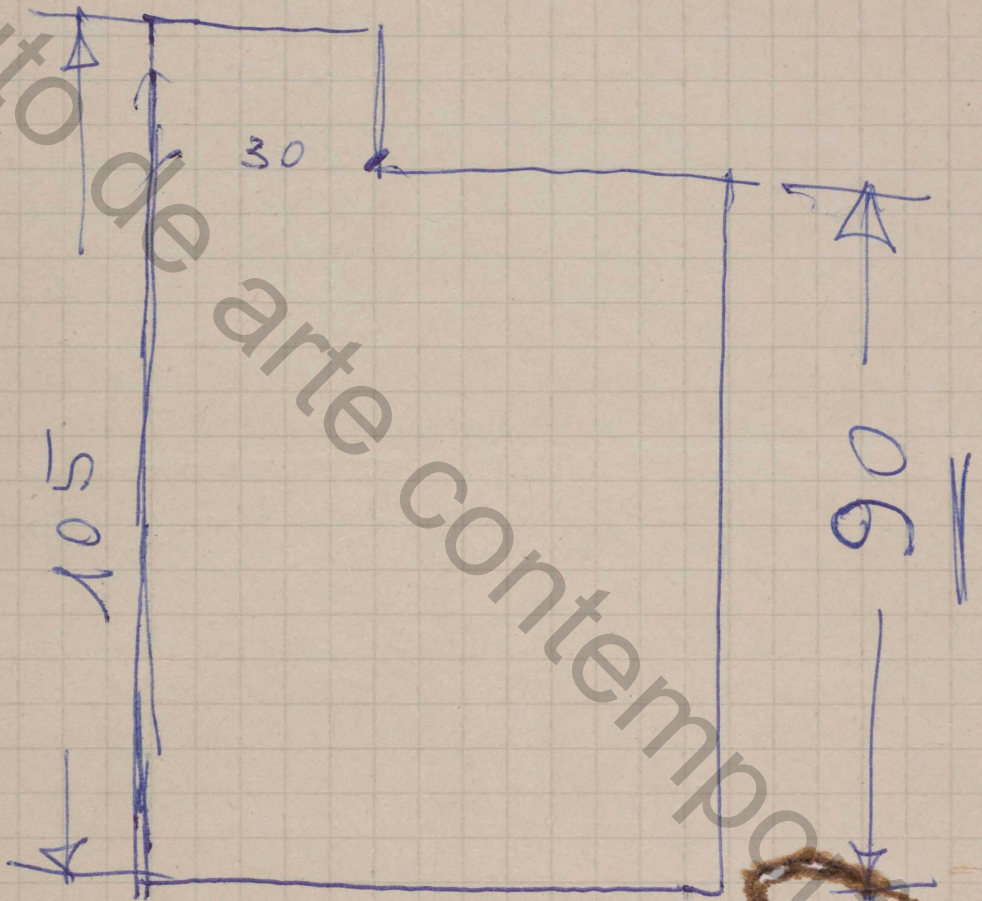
PESSO N° 1

105

de arte contemporânea

53 (2)
150
10

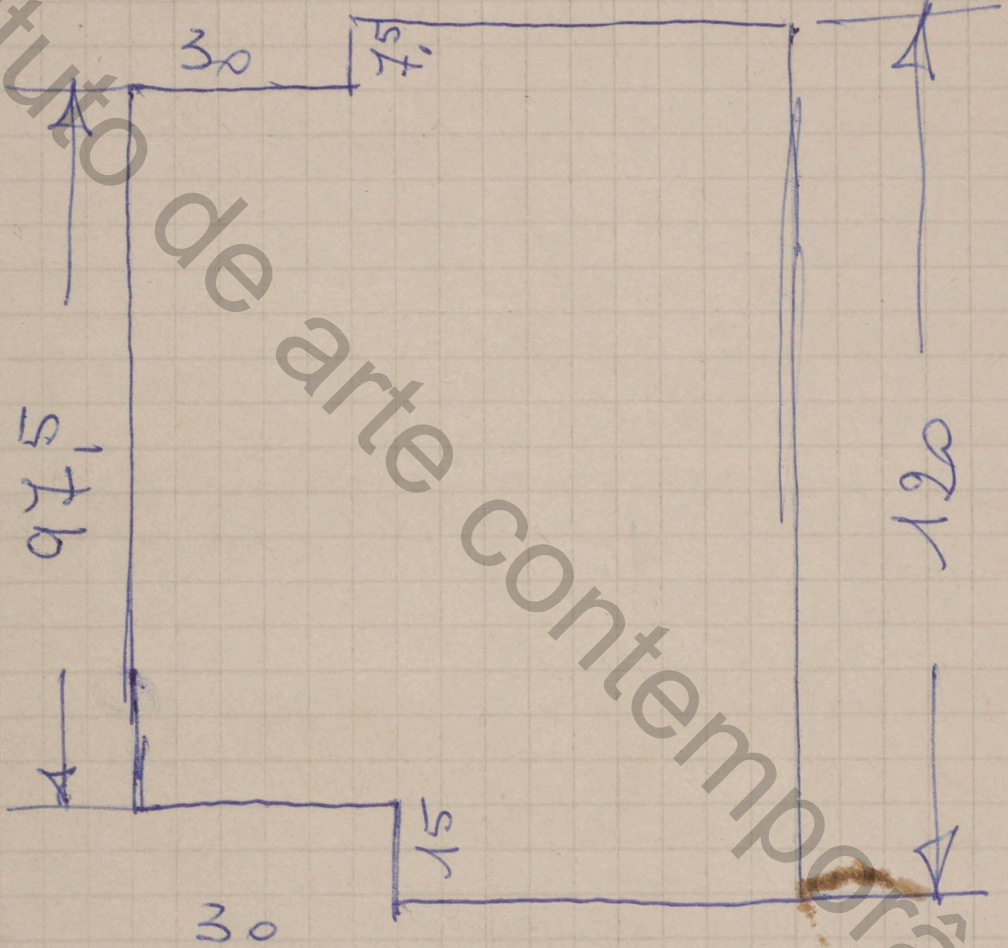
PERZON



PE 22

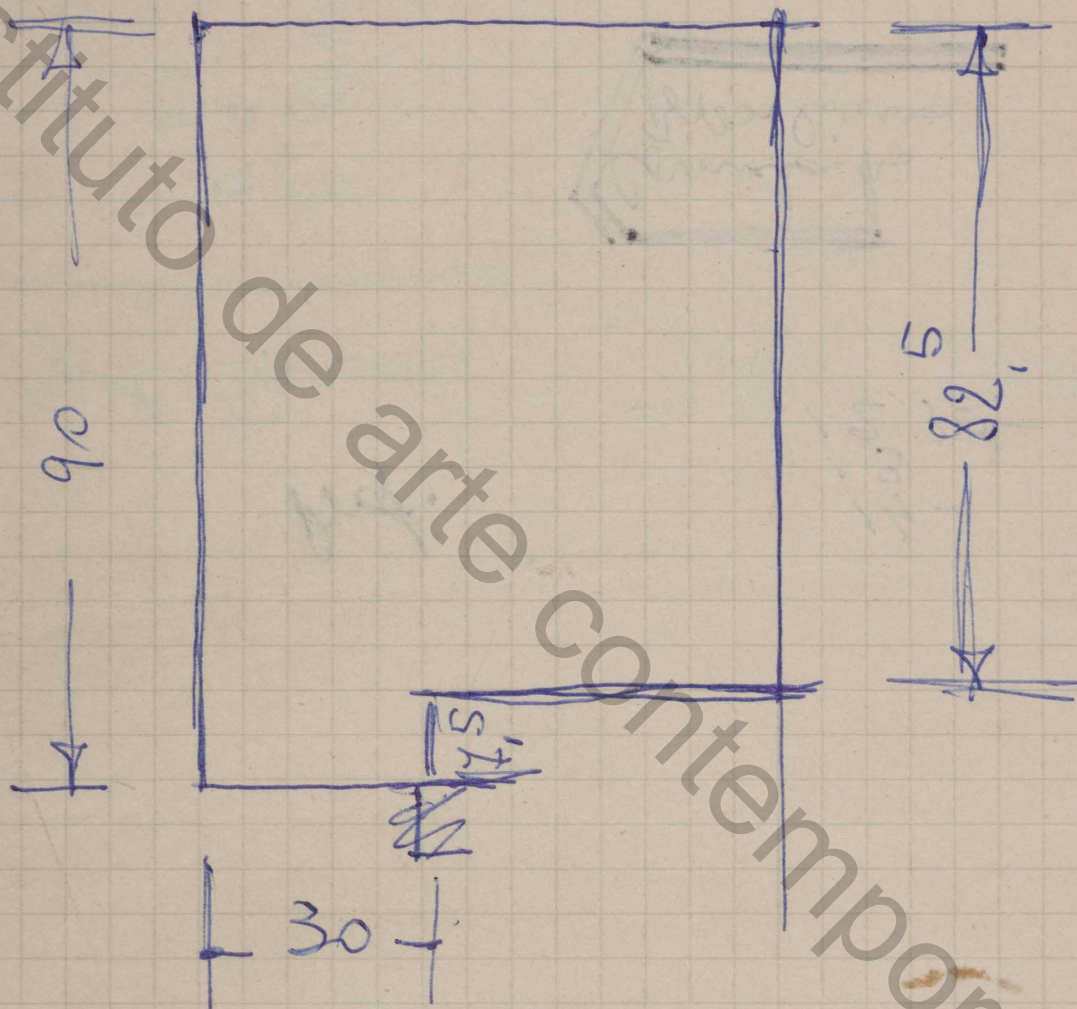
Nº 3

instituto de arte contemporânea



97,5
7,5
120,0

PE 220 0/4



Per le GRU Tutti i pesi
vanno considerati alti m. 1,35

21859

instituto de arte contemporânea

Art.

Prof SARNO

14-
13
12,30-

JAN SARNO

Comitê
Brasileiro

12.350
03-
05-
02-
01-
12.350
116
13
13
11