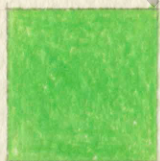


POLYCHROMOS FABER-CASTELL 72 (LAPIS)



155



171



162



163



161



159



158



170



168



167



165



174



173



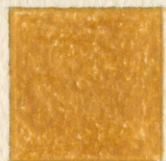
172



185



184



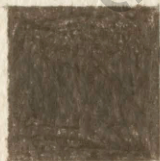
183



182



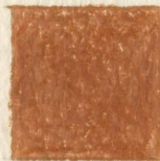
180



176



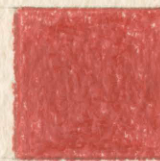
175



187



189



191



190



192



193



230



232



233



234



199



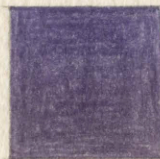
T D'o 3800-18



RS 808-5



RS 808-3'7



S 104-6



L'EC. H 186