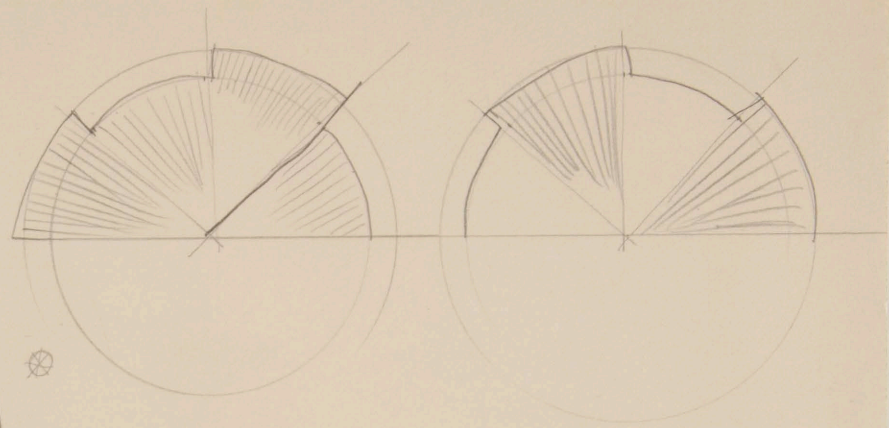
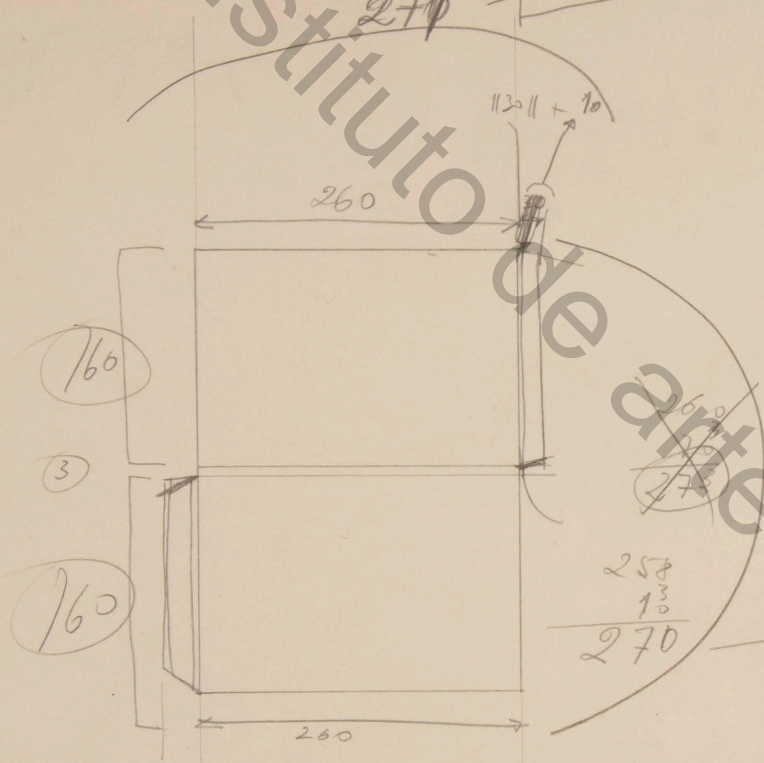


instituto de arte contemporânea

~~270~~ = 258 + 3 + 10



$$\begin{array}{r} 258 \\ 13 \\ \hline 270 \end{array}$$

$$\begin{array}{r} 160 + 3 = \text{scribble} \\ 2 \\ \hline 20 \\ 3 \\ \hline 23 \end{array}$$

$$\begin{array}{r} 252 \\ 05 \\ 12 \\ \hline 137 + 10 \end{array}$$

130
128

$$\begin{array}{r} 254 \\ 52 \end{array}$$