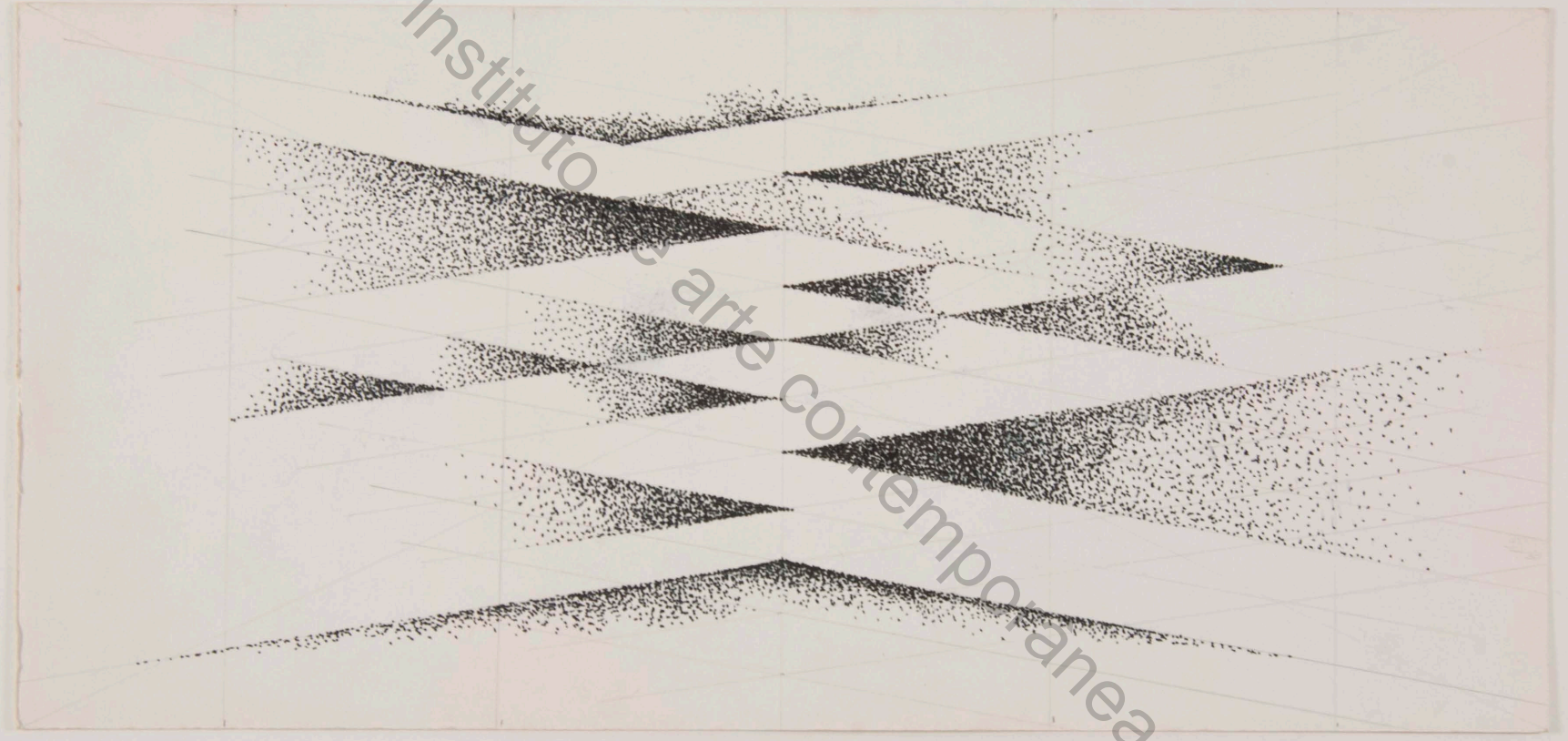
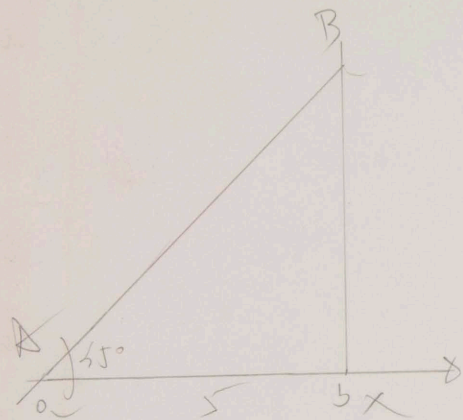


instituto de arte contemporanea



Instituto de arte contemporânea



$$\tan 45 =$$



$$\tan 45 = 0,70710$$

$$\tan 45 = \frac{5}{AB}$$

$$\tan 45 = \frac{5}{AB} =$$

$$\begin{aligned} \tan 45 \cdot AB &= 5 \\ \frac{\tan 45}{a \cdot x} &= AB \\ \tan x \cdot \frac{5}{AB} & \end{aligned}$$

~~$$\begin{aligned} a &= e \\ b &= x \\ ax &= be \quad x = \frac{be}{a} \end{aligned}$$~~

$$\tan 45 \cdot AB = 5$$