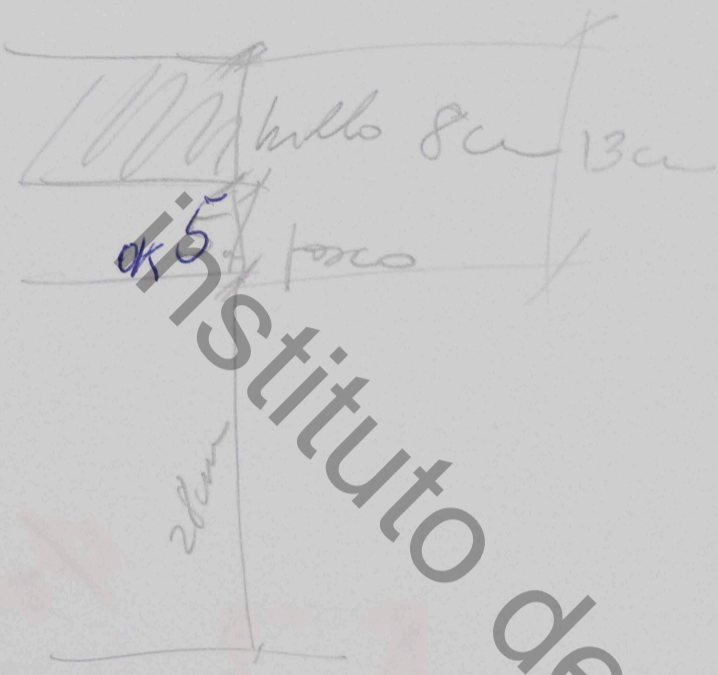


$$\begin{aligned}
 30\text{cm} - 5\text{cm} &= 5 \times 5\text{cm} = 25 \\
 - \text{hubs} &= 4 \times 8\text{cm} = 32 \\
 + 5\text{cm de hilo} &= 57
 \end{aligned}$$

Scale 1:25

Varanda



$$\begin{array}{r}
 57 \\
 28 \\
 \hline
 85
 \end{array}$$

$$\begin{array}{r}
 13\text{cm} \\
 \times 4\text{cm} \\
 \hline
 52\text{cm}
 \end{array}$$

$$\begin{array}{r}
 7\text{cm} = 28 \\
 \times 2 \\
 \hline
 52 + 4 = \\
 \hline
 80 \\
 4 \\
 \hline
 84\text{cm} =
 \end{array}$$

$$\begin{array}{r}
 127 \\
 197 \\
 \hline
 324 \quad 14 \\
 \quad \quad \quad 81
 \end{array}$$

$$\begin{array}{r}
 3 \quad 2 \\
 192 \\
 \times 4 \\
 \hline
 788
 \end{array}$$

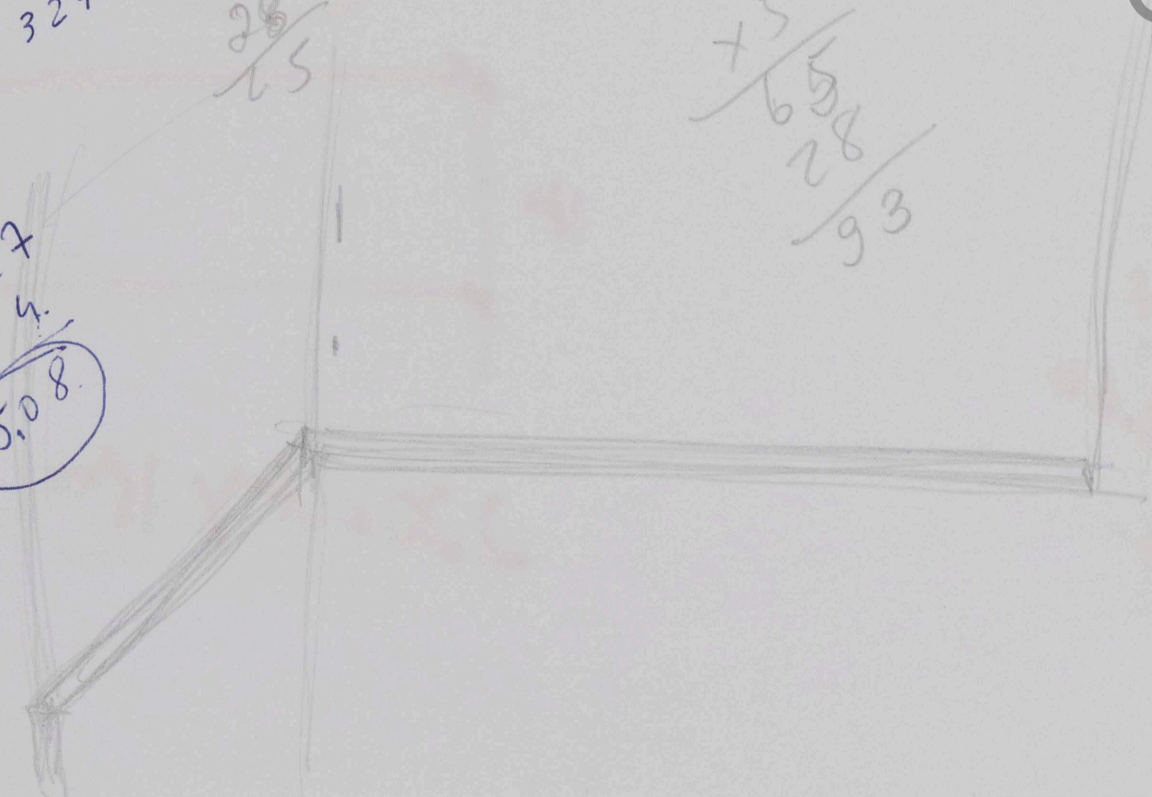
$$\begin{array}{r}
 127 \quad 14 \\
 07 \quad 311 \\
 3 \\
 \hline
 324
 \end{array}$$

324

$$\begin{array}{r}
 17\text{cm} \\
 28 \\
 \hline
 65
 \end{array}$$

$$\begin{array}{r}
 135 \\
 \times 5 \\
 \hline
 675 \\
 28 \\
 \hline
 93
 \end{array}$$

$$\begin{array}{r}
 2 \\
 127 \\
 \times 4 \\
 \hline
 508
 \end{array}$$



Instituto de arte contemporânea