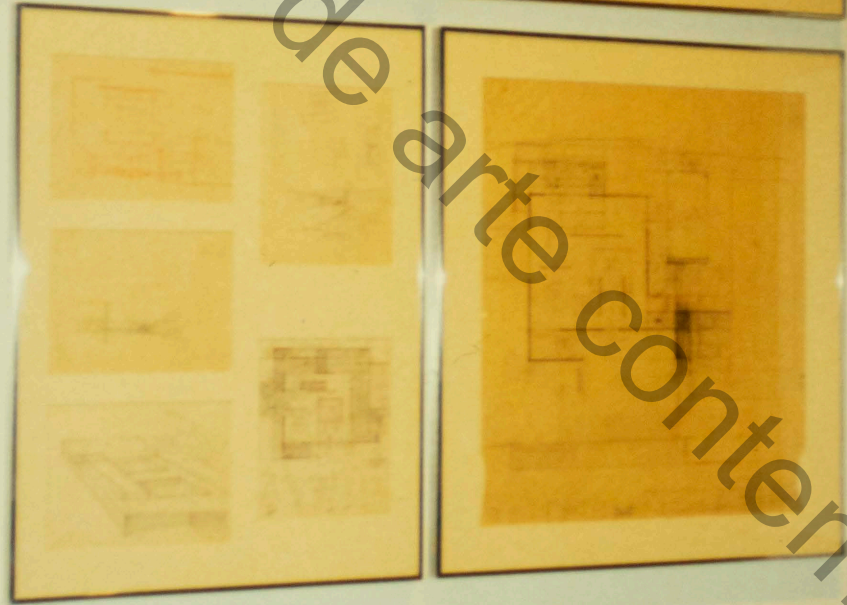


GERMAN PAVILION, 1935 BRUSSELS WORLD'S FAIR



GERMAN PAVILION
1935
BRUSSELS WORLD'S FAIR
The German Pavilion, designed by Mies van der Rohe, is a prime example of modernist architecture. It features a flat roof supported by a series of columns, creating an open-plan space. The building's design is characterized by its use of glass and steel, and its lack of traditional walls and roof. The pavilion was a landmark in the development of modern architecture and was widely praised for its innovative design.

instituto de arte contemporânea