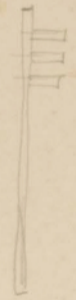


Instituto de Arte Contemporânea

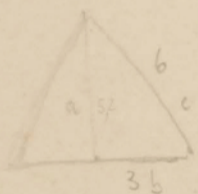


PODERIA HAVER ALTERNATIVA  
ELIMINANDO AS FILAS SUPERIORES  
E INFERIORES.  
25 ESPAÇOS X 18 ELEMENTOS  
PARA MAIOR LUMINOSIDADE AS  
FILAS DE 8 ELEMENTOS VERMELHAS,  
AS DE 4 VERDES, SOBRE FUNDO PRETO.

ELEMENTO SALIENTES A ESTUDAR  
(EM ALUMÍNIO)



25 ESPAÇOS



$$a^2 + b^2 = c^2$$

$$9^2 + 36^2 = 37^2$$

$$81 + 1296 = 1377$$

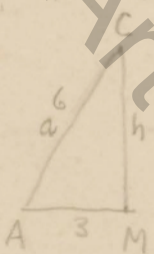
$$37^2 = 1377$$

$$\frac{25}{25} \cdot 36$$

$$\frac{125}{50}$$

$$\frac{625}{625}$$

$$6 \cdot 6 = 36$$



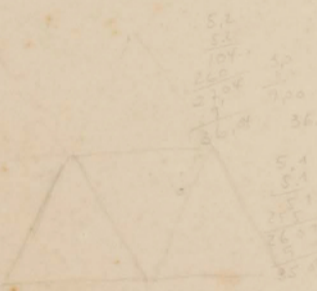
$$h^2 = 36 - \left(\frac{36}{2}\right)^2 = \frac{3}{4} 36$$

$$h = \frac{3 \cdot 6}{2} = 9$$

$$\frac{266}{2} = 133$$

$$\sqrt{3} \cdot 1,5 = 4,5$$

$$\frac{1}{200} \cdot 1,9 = 1$$



$$25 + 9 = 36$$

$$36 = 9 + h^2$$

$$h^2 = 36 - \left(\frac{36}{2}\right)^2$$

$$h^2 = 36 - 18$$

$$h^2 = 18$$

$$\sqrt{18} \cdot 4,22 = 16$$

$$4 \cdot 4 = 16$$

$$200 \cdot 82,8 = 164$$

$$\frac{164}{36}$$

$$\frac{1,5}{1,5} = 1$$

$$\frac{1,5}{2,5} = 0,6$$

$$\frac{1,7}{1,7} = 1$$

$$\frac{1,7}{2,89} = 0,6$$

$$\frac{1,8}{1,8} = 1$$

$$\frac{1,8}{3,24} = 0,6$$

$$\frac{1,75}{1,75} = 1$$

$$\frac{1,75}{3,0625} = 0,6$$

$$\frac{1,526}{1,526} = 1$$

$$\frac{1,526}{6,31} = 0,6$$

Instituto de Arte Contemporânea

134 0630