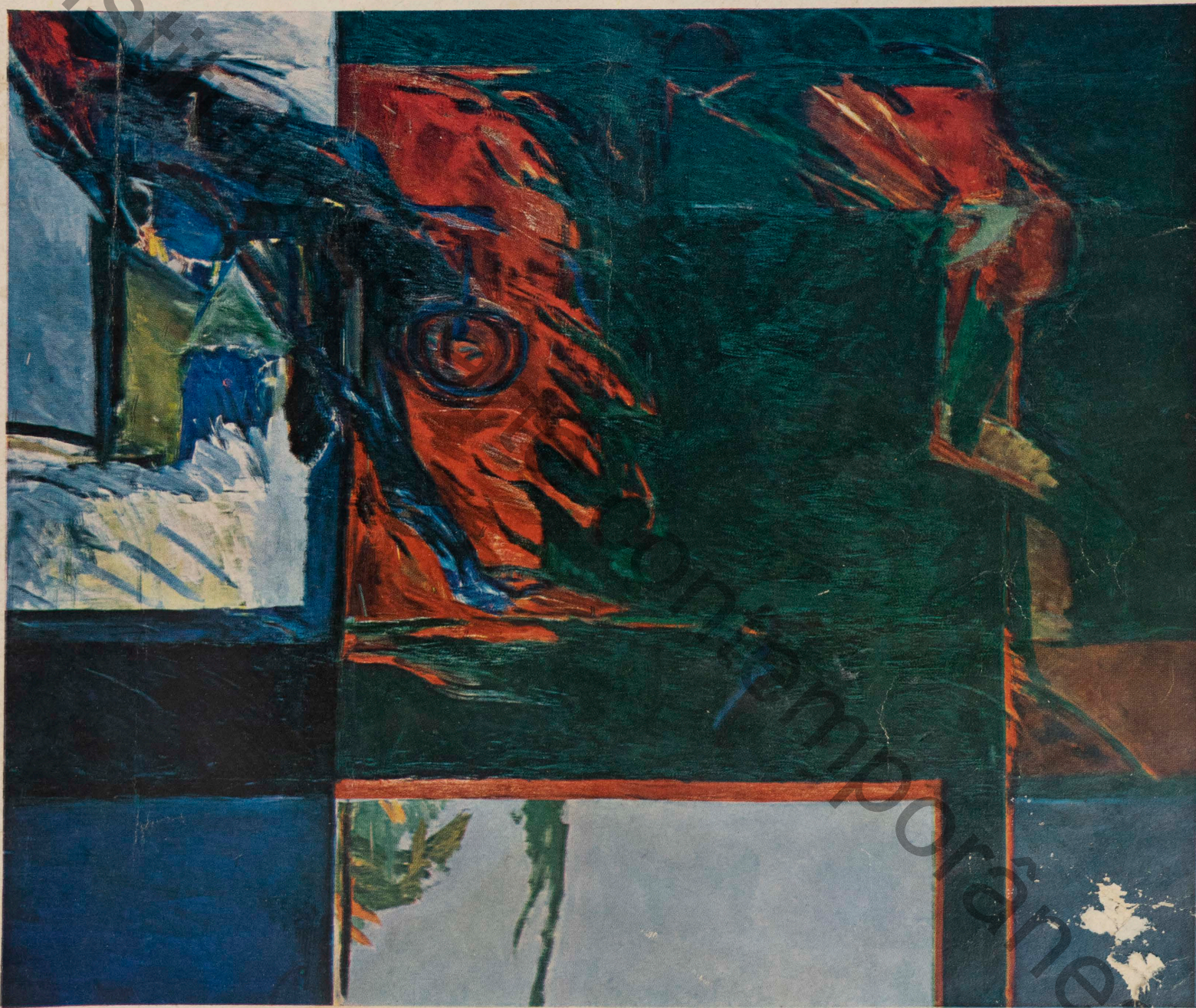


# The ARTS Review



PATRICIA PICOT 'FIGURES UNDERWATER' 1962 72 x 84 INS OIL ON CANVAS PURCHASED BY THE FELTON BEQUEST FOR THE NATIONAL GALLERY TO BE INCLUDED IN PROSECUTOR'S FIRST ONE-MAN SHOW WHICH IS OPENING AT THE REDFERN GALLERY

ate of a Girl L  
or 3rd cen B.C.  
Danc at. N

Portrait of L.  
and The Obsequies

are on view in the Sc.  
allery. Emile Bernard, a fellow stud.  
t at the Atelier Cormon, is shown in a  
rait, unusual for Toulouse Lautrec. Bau-  
ting is crowded with figures in a de-  
style landscape. Both pictures have  
queathed by Arthur Jeffress to the Tate  
ry.