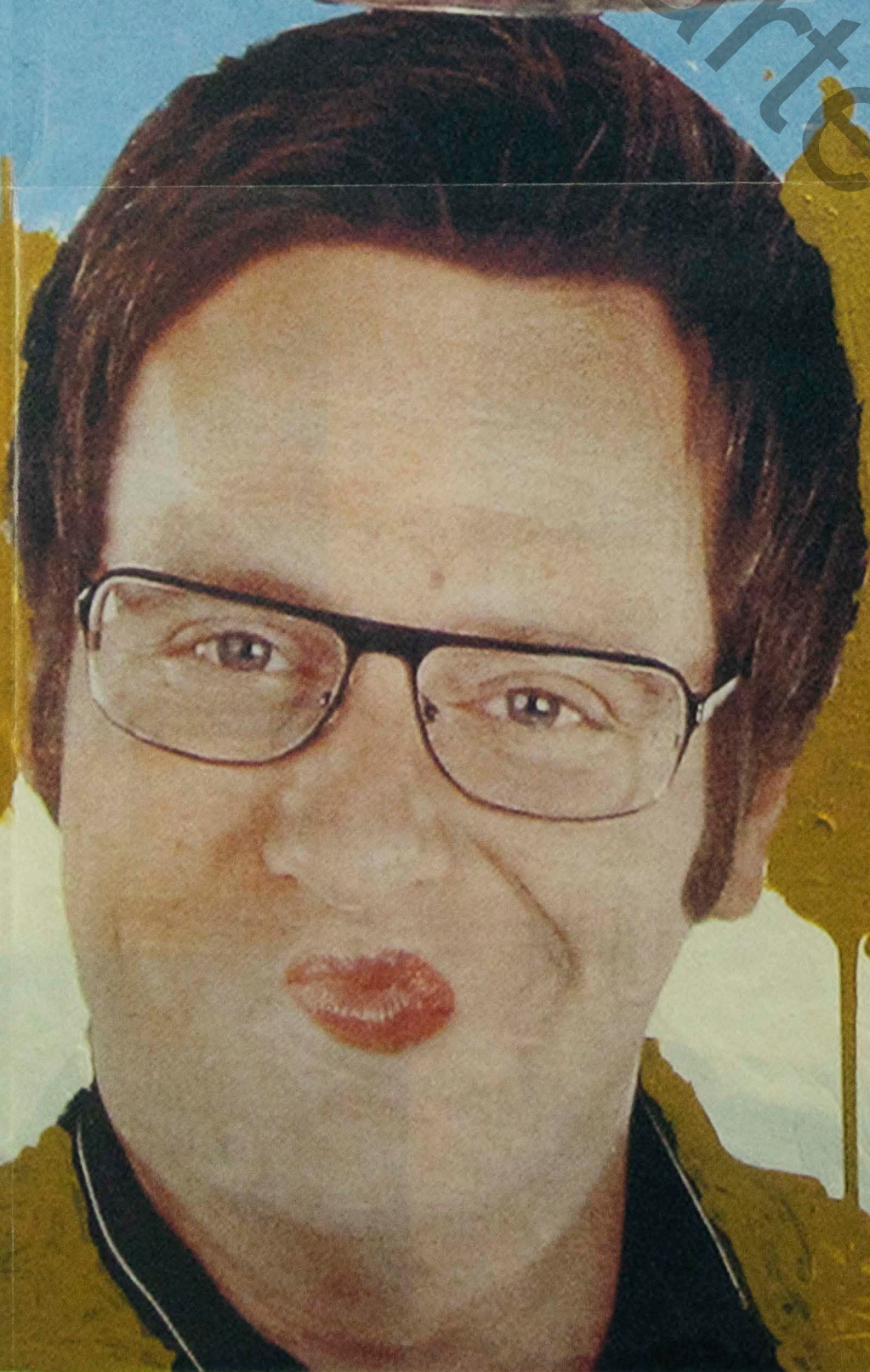


EIN GRUSS AUS WIEN





James Pollard  
Trailing for Pike in the River Lee (1831)  
Oil on canvas  
35.6 x 44.6 cm



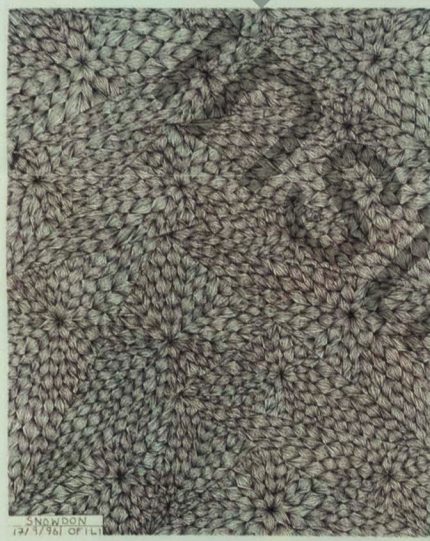
Edward Burra  
Skeleton Party  
(c.1952-1954)  
Watercolour  
on paper  
71.8 x 104.1 cm



After Francis Barlow  
From Various Birds and Beasts [...] (late 17th century)  
Engraving and etching on paper  
20.6 x 23.4 cm

Henry II.

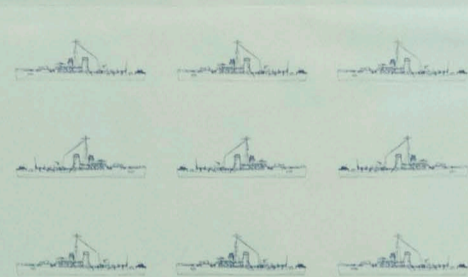
A Project by  
The Wrong Gallery  
Maurizio Cattelan,  
Massimiliano Gioni and  
Ali Subotnick



Chris Ofili  
From North Wales,  
Snowdon (1996)  
Etching on paper  
25 x 20 cm

### Close your eyes and think of England

A Wrong Gallery selection from the Tate Collection, with a contribution by Franz West



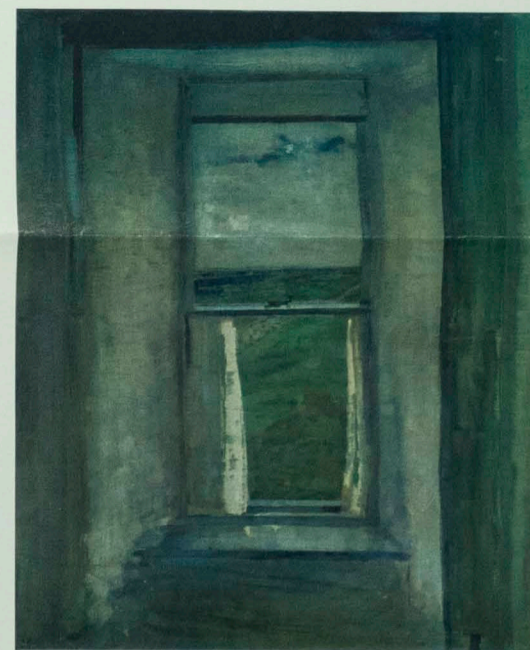
Ian Hamilton Finlay  
Flowers (1977)  
Lithograph  
22.9 x 28.8 cm

Fill in the flowers with colours from the palette below

- teal
- yellow
- orange
- red
- purple
- green
- blue
- black
- white



George Cumberland  
Inside the Peak Cavern, Castleton, Derbyshire (c.1820)  
Watercolour on paper  
14.6 x 21.9 cm

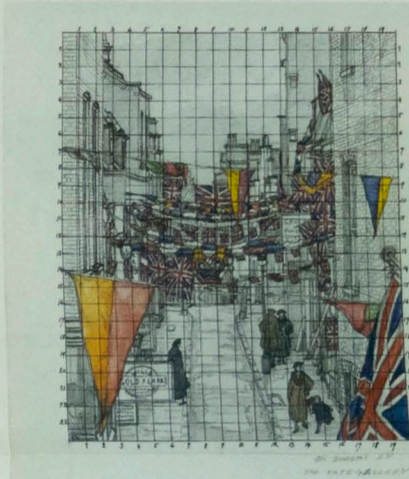


John Quinton  
Pringle  
The Window (1924)  
Oil on canvas  
56.2 x 46 cm

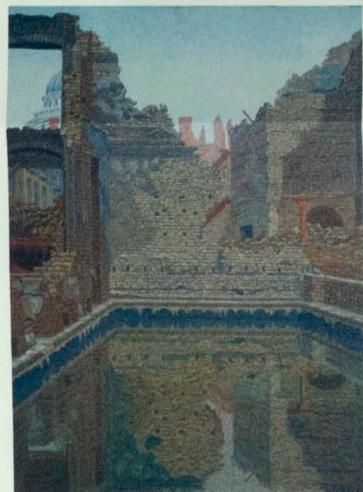


Tristram Hillier  
Harness (1944)  
Tempera on canvas  
60.3 x 81.3 cm

Charles Ginner  
Study for Flask Walk,  
Hampstead, on  
Coronation Day (1937)  
Pencil and  
watercolour on paper  
44.5 x 31.1 cm



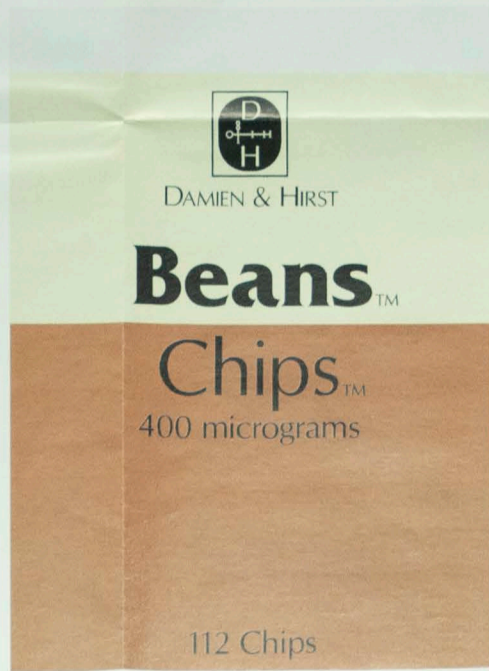
Paul Nash  
Grotto in the Snow (1939)  
Oil on canvas  
71.8 x 48.9 cm



Charles Ginner  
Emergency Water Storage Tank (1941-42)  
Oil on canvas  
68.6 x 50.8 cm



James Aumonier  
The Black Mountains (c.1905)  
Oil on canvas  
121.9 x 182.9 cm



Damien Hirst  
From The Last Supper, Beans & Chips (1995)  
Screenprint on paper  
122 x 95.7 cm

### GEESE FLYING SOUTH

NO  
THOUGHTS  
COUNTING  
396  
BAREFOOT  
PACES  
ON  
ONE  
DEER  
PATH

A SEVEN DAY WANDERING WALK CAIRNGORMS SCOTLAND SEPTEMBER 1990



James Pollard  
Fly Fishing in the  
River Lee near the  
Ferry Boat Inn (1811)  
Oil on canvas  
35.6 x 44.6 cm

HENRY TATE ETC

HENRY, the unwelcome guest of TATE ETC., is an emanation from *The Wrong Gallery*, a parasite institution temporarily living inside Tate Modern. *The Wrong Gallery* is Maurizio Cattelan, Massimiliano Gioni and Ali Subotnick. With thanks to Andrea Oberbacher, Franz West and Charles Danby. HENRY II. is a supplement published by TATE ETC. Designed by Conrad Windlin and Nina Schweizer. Printed by Göttsche Druck (Germany). www.tate.org.uk/tateetc